

# Modular Pressure Reducing Valve

Model: ZDR6D...4XJ



- ◆ Size 6
- ◆ Maximum working pressure 210 bar
- ◆ Maximum working flow 50 L/min

## Contents

Function description, sectional drawing	02
Models and specifications	03
Functional symbols	03
Technical parameters	04
Characteristic curve	05
Component size	06

## Features

- Sandwich plate valve
- 2 kinds of pressure ranges
- 2 kinds of adjusting elements:
  - Rotary knob
  - Hexagon screw with sleeve and protective cap
- Pressure reducing in port A, B or P
- Check valve, optional

## Function description, sectional drawing

The ZDR6D... reducing valve is a three-way direct operated pressure reducing valve with sandwich plate construction and reducing in the the secondary circuit. It is used for system pressure reducing.

The valve is composed of valve body (1), control spool (2), compression spring (3), adjusting element (4) and an optional check valve. The secondary pressure is set by the adjusting element (4).

### Model DA

At rest, the valve is normally open, the fluid is flow freely from port A1 to port A2. The pressure in port A2 acts on the piston area opposite to the compression through the control channel (5). When the pressure at port A2 exceeds the set value of spring (3), the control spool (2) is moved to the control position, the pressure at port A2 remains stable. The signal and control oil are supplied internal from port A2 through the control channel (5).

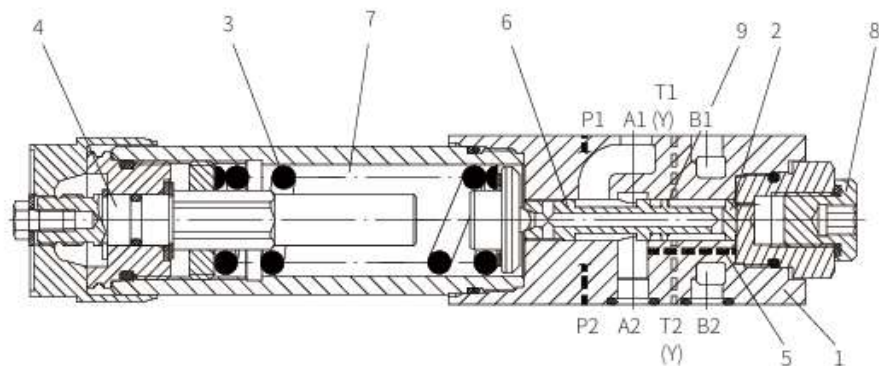
If the pressure at port A2 continues to increase due to external force acts on the actuator, the valve spool will still move towards the compression spring (3), then the port A2 is connected to the oil tank through the shoulder (7) pressure increase. The oil in the spring chamber (7) is drained external to the oil tank through the orifice (6) to the port T.

The pressure gauge connection (8) is used for secondary pressure monitoring of the valve. In the version DA, the check valve can only be added to the oil port from A2 to A1 to ensure flow passage smoothly.

### Model DP and DB

In model DP, the pressure is reduced in port P1, the signal and control oil are supplied internal from port P1.

In model DB, the pressure is reduced in port P1, but control oil is taken from port B. When the directional valve in position P to A, the pressure of port B must not exceed the set pressure. Otherwise, the pressure at port A will be decrease.



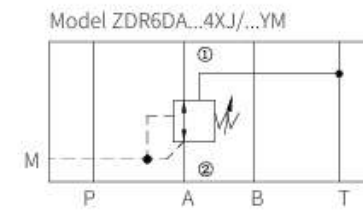
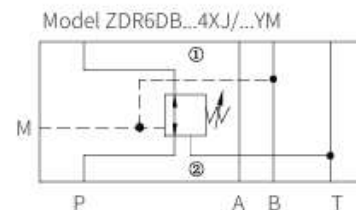
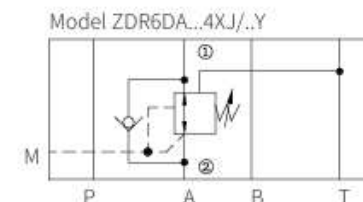
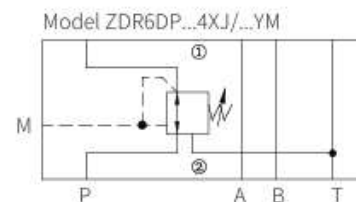
Model ZDR6DA1...4XJ/...YM

## Models and specifications

Z DR 6 D - 4X J Y	
sandwich plate	=Z
reducing valve	=DR
size 6	=6
direct operated	=D
pressure reducing in port A	=A
pressure reducing in port B	=B
pressure reducing in port P	=P
adjusting element	
rotary knob	=1
hexagon screw with sleeve and protective cap	=2
40 to 49 series (40 to 49 series: installation and connection size unchanged)	=4X
Rekith	=J
more information in text	
sealing material	
No code=	NBR seals
V=	FKM seals (consult for other seals)
no code= with check valve only for version "A"	
M=	without check valve
Y=	control oil supply internal and drain external
25=	maximum secondary pressure 25bar
75=	maximum secondary pressure 75bar
150=	maximum secondary pressure 150bar
210=	maximum secondary pressure 210bar

## Functional symbols

(①= Valve side, ②= Subplate side)



## Technical parameters

Installation position	optional	
Environment temperature range	-30 to +80(NBR seal) -20 to +80 (FKM seal)	
Weight	kg	1.2KG
<b>Hydraulic</b>		
Maximum working pressure	bar	315
Maximum secondary pressure	bar	25; 75; 150; 210
Back pressure port T(Y)	bar	160
maximum flow	L/min	50
Pressure medium	Mineral oil (HL, HLP) <sup>1)</sup> in accordance with DIN 51524; Fast living organisms degraded oil according to VDMA 24568; HETG (Rapeseed oil) <sup>1)</sup> ; HEPG(Polyethyleneglycol) <sup>2)</sup> ; HEES (Synthetic Fats) <sup>2)</sup>	
Pressure medium temperature range	°C	-30 to +80(NBR seal)
		-20 to +80 (FKM seal)
Viscosity range	mm <sup>2</sup> /s	10 to 800
Cleanliness of oil <sup>3)</sup>	The maximum allowable pollution level of oil is ISO4406 Class 20/18/15	

1) For NBR seal and FKM seal.

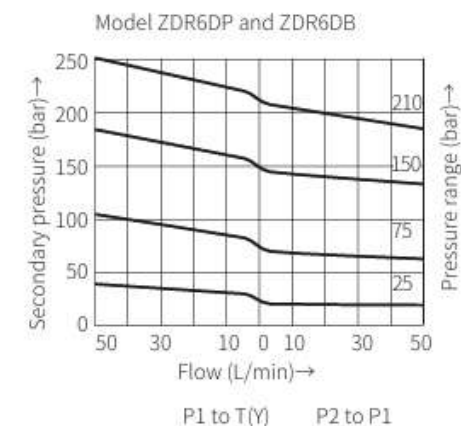
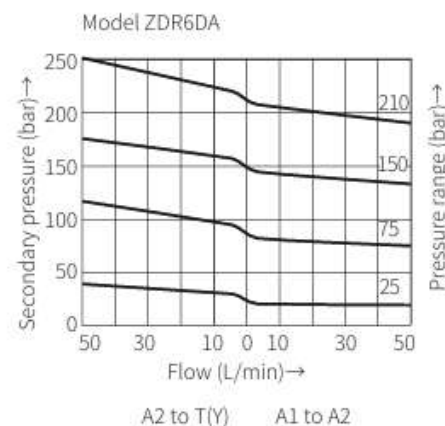
2) Only for FKM seal.

3) The oil must meet the cleanliness degree requested by the components in the hydraulic system.

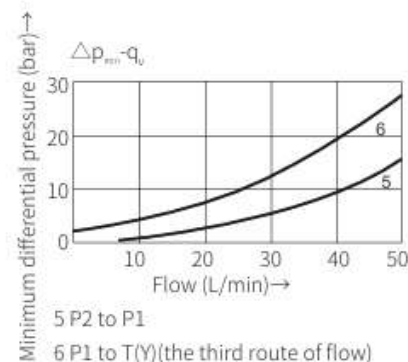
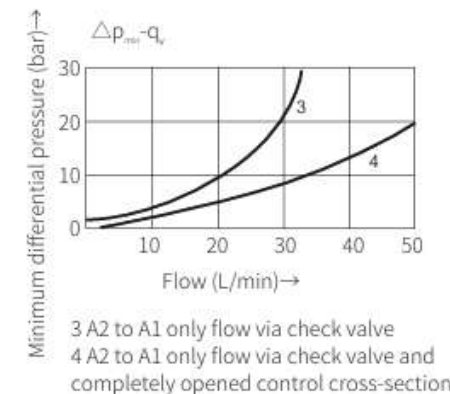
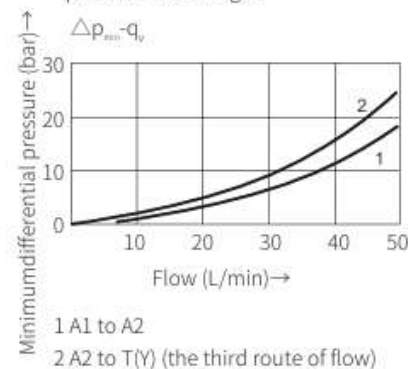
Effective oil filtration can prevent failure and increase the service life of the components.

## Characteristic curve

(Measured when using HLP46,  $\vartheta_{oil}=40^{\circ}\text{C} \pm 5^{\circ}\text{C}$ )



Note: When the set pressure is low, the characteristic curve remains within the corresponding pressure level range.



The characteristic curves apply to the pressure at the valve output pressure = 0 bar across the entire flow range.