

BKP1Q1

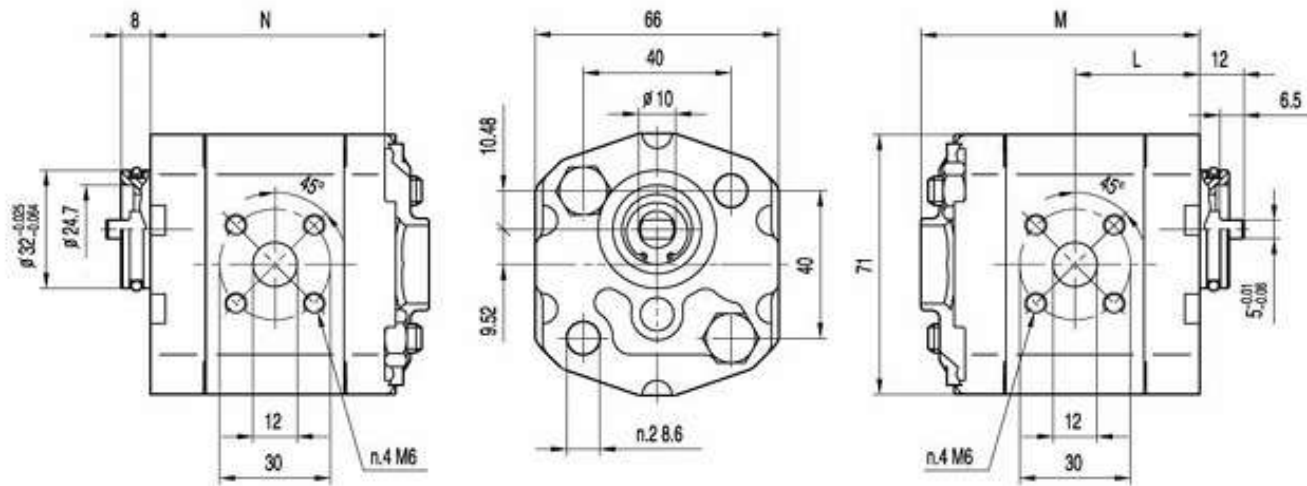


M6 螺纹深 12。
安装泵时，n.2 M8 螺钉扭矩设定为
 27 ± 3 Nm。

M6 threads depth 12。
To mount the pump, n.2 M8 screws,
with a torque wrench setting fixed
at 27 ± 3 Nm.

出油口
OUTLET

进油口
INLET

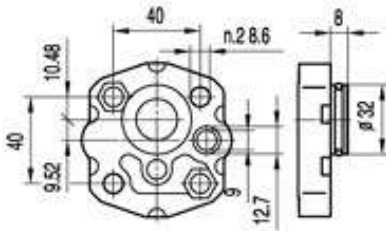


规格 Type	排量 Displacement	最大压力 Max pressure			最高转速 Max. speed	最低转速 Min. speed	尺寸 Dimensions		
		P1	P2	P3			M	N	L
	(cm ³ /rev)	bar	bar	bar	(r/min)	(r/min)	mm	mm	mm
BKP1Q1-D-0.8	0.8	230	250	270	6000	1000	73.5	61.5	32.8
BKP1Q1-D-1.1	1.1	230	250	270	6000	1000	74	62	33
BKP1Q1-D-1.3	1.3	230	250	270	6000	1000	75	63	33.5
BKP1Q1-D-1.6	1.6	230	250	270	6000	1000	76	64	34
BKP1Q1-D-1.8	1.8	230	250	270	6000	1000	77	65	34.5
BKP1Q1-D-2.1	2.1	230	250	270	6000	1000	78	66	35
BKP1Q1-D-2.7	2.7	230	250	270	6000	800	80	68	36
BKP1Q1-D-3.2	3.2	210	230	250	5000	800	82	70	37
BKP1Q1-D-3.7	3.7	210	230	250	4500	800	84	72	38
BKP1Q1-D-4.2	4.2	210	230	250	4000	800	86	74	39
BKP1Q1-D-4.8	4.8	190	210	230	3500	600	88	76	40
BKP1Q1-D-5.8	5.8	190	210	230	3000	600	92	80	42
BKP1Q1-D-7.0	7.0	160	180	200	2500	600	96	84	44
BKP1Q1-D-8.0	8.0	160	180	200	2100	600	100	88	46

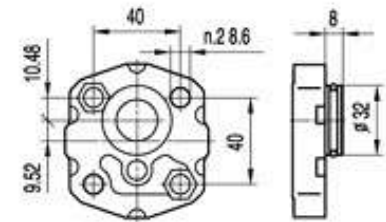
BKP1

前盖/Front COVER

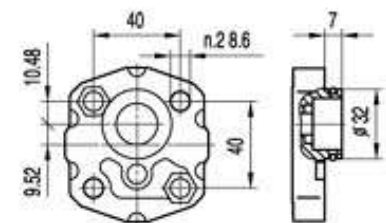
轴伸/SHAFTS



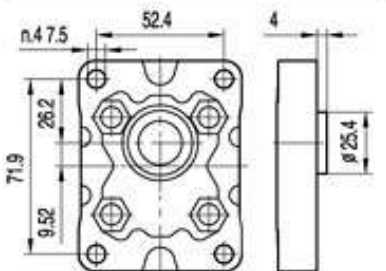
O0



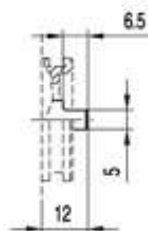
Q1



Q2

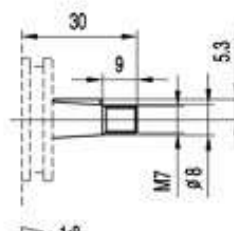


B0



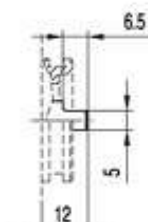
G0

最大扭矩
Max.Torque 20 Nm



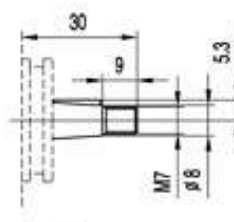
T0

最大扭矩
Max.Torque 25 Nm



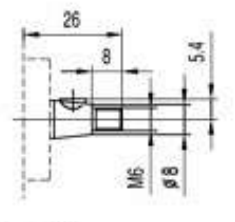
G0

最大扭矩
Max.Torque 20 Nm



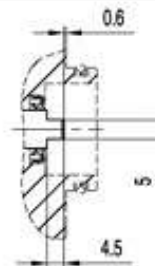
T0

最大扭矩
Max.Torque 25 Nm



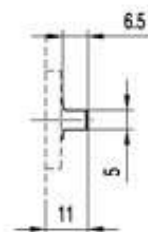
T1

最大扭矩
Max.Torque 23 Nm



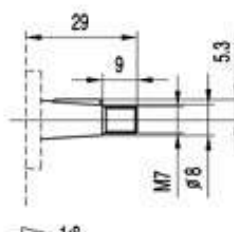
G1

最大扭矩
Max.Torque 20 Nm



G0

最大扭矩
Max.Torque 20 Nm



T0

最大扭矩
Max.Torque 25 Nm

BKP1

油口/PORTS



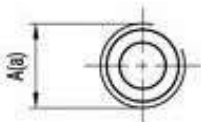
L0

规格 TYPE	进油口 INLET	出油口 OUTLET
	A	a
BKP1...0.8 ÷ BKP1...8.0	G1/4	φ9



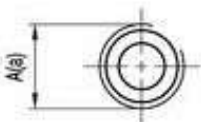
L1

规格 TYPE	进油口 INLET	出油口 OUTLET
	A	a
BKP1...0.8 ÷ BKP1...8.0	G3/8	φ9



L2

规格 TYPE	进油口 INLET	出油口 OUTLET
	A	a
BKP1...0.8 ÷ BKP1...8.0	G3/8	G1/4



L3

规格 TYPE	进油口 INLET	出油口 OUTLET
	A	a
BKP1...0.8 ÷ BKP1...8.0	G3/8	G3/8