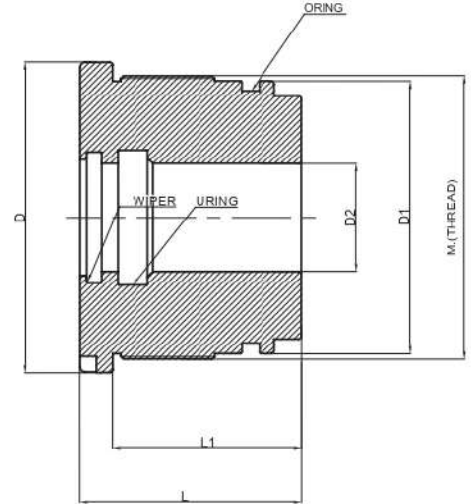


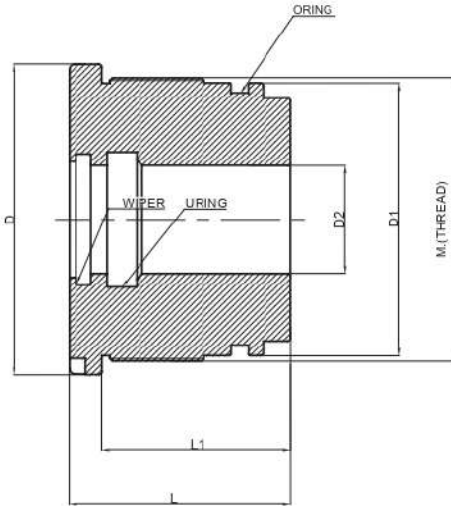
## CAST IRON GLAND STD. 1



Gland (Cast Iron GG25 / GG26 DIN 1691)

CODE	U-RING	WIPER	ORING	D	D1	D2	L	L1	THREAD	kg
GDC-B 32x16	16x22x5	16x24x5/7	28x2,5	40	33	16	40	32	36x1,5	0,190 kg
GDC-B 32x18	18x25x5	18x26x5/7	28x2,5	40	33	18	40	32	36x1,5	0,170 kg
GDC-B 32x20	20x28x5	20x28x5/7	28x2,5	40	33	20	40	32	36x1,5	0,150 kg
GDC-B 32x22	22x30x6	22x30x5/7	28x2,5	40	33	22	40	32	36x1,5	0,120 kg
GDC-B 35x20	20x28x5	20x28x5/7	31x3	45	36	20	40	32	39x1,5	0,200 kg
GDC-B 35x22	22x30x6	22x30x5/7	31x3	45	36	22	40	32	39x1,5	0,170 kg
GDC-B 35-25	25x35x6	25x33x5/7	31x3	45	36	25	40	32	39x1,5	0,245 kg
GDC-B 40-16	16x22x5	16x24x5/7	36x3	50	41	16	40	32	45x1,5	0,330 kg
GDC-B 40x20	20x28x5	20x28x5/7	36x3	50	41	20	40	32	45x1,5	0,300 kg
GDC-B 40x22	22x30x6	22x30x5/7	36x3	50	41	22	40	32	45x1,5	0,270 kg
GDC-B 40x25	25x35x6	25x33x5/7	36x3	50	41	25	40	32	45x1,5	0,230 kg
GDC-B 40x28	28x38x6	28x36x5/7	36x3	50	41	28	40	32	45x1,5	0,190 kg
GDC-B 45x20	20x28x5	20x28x5/7	39.69x3.53	55	46	20	45	37	50x1,5	0,440 kg
GDC-B 45x25	25x35x6	25x33x5/7	39.69x3.53	55	46	25	45	37	50x1,5	0,370 kg
GDC-B 45x30	30x40x8	30x38x5/7	39.69x3.53	55	46	30	45	37	50x1,5	0,280 kg
GDC-B 50x20	20x28x5	20x28x5/7	44.45x3.53	60	51	20	45	37	55x1,5	0,570 kg
GDC-B 50x25	25x35x6	25x33x5/7	44.45x3.53	60	51	25	45	37	55x1,5	0,500 kg
GDC-B 50x28	28x38x6	28x36x5/7	44.45x3.53	60	51	28	45	37	55x1,5	0,450 kg
GDC-B 50x30	30x40x8	30x38x5/7	44.45x3.53	60	51	30	45	37	55x1,5	0,410 kg
GDC-B 50x32	32x40x8	32x40x5/7	44.45x3.53	60	51	32	45	37	55x1,5	0,380 kg
GDC-B 50x35	35x45x8	35x43x5/7	44.45x3.53	60	51	35	45	37	55x1,5	0,320 kg
GDC-B 50x36	36x46x8	36x44x5/7	44.45x3.53	60	51	36	45	37	55x1,5	0,300 kg
GDC-B 55x25	25x35x6	25x33x5/7	47.63x3.53	65	56	25	52	42	60x1,5	0,750 kg
GDC-B 55x30	30x40x8	30x38x5/7	47.63x3.53	65	56	30	52	42	60x1,5	0,650 kg
GDC-B 55x35	35x45x8	35x43x5/7	47.63x3.53	65	56	35	52	42	60x1,5	0,550 kg
GDC-B 60x30	30x40x8	30x38x5/7	53.57x3.53	70	61	30	52	42	65x1,5	0,830 kg
GDC-B 60x35	35x45x8	35x43x5/7	53.57x3.53	70	61	35	52	42	65x1,5	0,720 kg
GDC-B 60x40	40x50x10	40x48x5/7	53.57x3.53	70	61	40	52	42	65x1,5	0,590 kg
GDC-B 60x45	45x55x10	45x55x5/7	53.57x3.53	70	61	45	52	42	65x1,5	0,450 kg
GDC-B 63x30	30x40x8	30x38x5/7	57.15x3.53	75	64	30	52	42	69x1,5	0,970 kg
GDC-B 63x35	35x45x8	35x43x5/7	57.15x3.53	75	64	35	52	42	69x1,5	0,870 kg
GDC-B 63x36	36x46x8	36x44x5/7	57.15x3.53	75	64	36	52	42	69x1,5	0,840 kg
GDC-B 63x40	40x50x10	40x48x5/7	57.15x3.53	75	64	40	52	42	69x1,5	0,740 kg

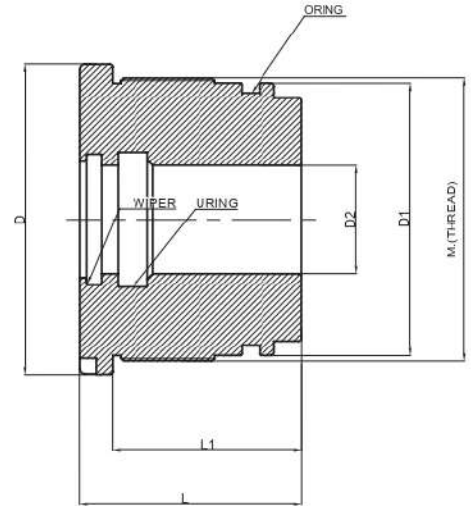
# CAST IRON GLAND STD. 1



Gland (Cast Iron GG25 / GG26 DIN 1691)

CODE	U-RING	WIPER	ORING	D	D1	D2	L	L1	THREAD	kg
GDC-B 63x45	45x65x10	45x55x5/7	57.15x3.53	75	64	45	52	42	69x1,5	0,590 kg
GDC-B 63x50	-	50x60x5/7	57.15x3.53	75	64	50	52	42	69x1,5	0,520 kg
GDC-B 65x30	30x40x8	30x38x5/7	59.92x3.53	80	66	30	63	52	70x1,5	1,280 kg
GDC-B 65x35	35x45x8	35x43x5/7	59.92x3.53	80	66	35	63	52	70x1,5	1,160 kg
GDC-B 65x40	40x50x10	40x48x5/7	59.92x3.53	80	66	40	63	52	70x1,5	1,010 kg
GDC-B 65x45	45x55x10	45x55x5/7	59.92x3.53	80	66	45	63	52	70x1,5	0,840 kg
GDC-B 70x25	25x35x6	25x33x5/7	65.10x3.53	85	71	25	63	52	75x2	1,640 kg
GDC-B 70x30	30x40x8	30x38x5/7	65.10x3.53	85	71	30	63	52	75x2	1,530 kg
GDC-B 70x35	35x45x8	35x43x5/7	65.10x3.53	85	71	35	63	52	75x2	1,410 kg
GDC-B 70x40	40x50x10	40x48x5/7	65.10x3.53	85	71	40	63	52	75x2	1,250 kg
GDC-B 70x45	45x55x10	45x55x5/7	65.10x3.53	85	71	45	63	52	75x2	1,090 kg
GDC-B 70x50	50x60x10	50x60x5/7	65.10x3.53	85	71	50	63	52	75x2	0,900 kg
GDC-B 70x55	55x65x10	55x65x5/7	65.10x3.53	85	71	55	63	52	75x2	0,720 kg
GDC-B 75x30	30x40x8	30x38x5/7	69.85x3.53	90	76	30	63	52	80x2	1,800 kg
GDC-B 75x35	35x45x8	35x43x5/7	69.85x3.53	90	76	35	63	52	80x2	1,680 kg
GDC-B 75x40	40x50x10	40x48x5/7	69.85x3.53	90	76	40	63	52	80x2	1,520 kg
GDC-B 75x45	45x55x10	45x55x5/7	69.85x3.53	90	76	45	63	52	80x2	1,370 kg
GDC-B 75x50	50x60x10	50x60x5/7	69.85x3.53	90	76	50	63	52	80x2	1,170 kg
GDC-B 75x55	55x65x10	55x65x5/7	69.85x3.53	90	76	55	63	52	80x2	0,970 kg
GDC-B 80x30	30x40x8	30x38x5/7	74x4	95	81	30	63	52	85x2	2,080 kg
GDC-B 80x35	35x45x8	35x43x5/7	74x4	95	81	35	63	52	85x2	1,950 kg
GDC-B 80x40	40x50x10	40x48x5/7	74x4	95	81	40	63	52	85x2	1,790 kg
GDC-B 80x45	45x55x10	45x55x5/7	74x4	95	81	45	63	52	85x2	1,620 kg
GDC-B 80x50	50x60x10	50x60x5/7	74x4	95	81	50	63	52	85x2	1,450 kg
GDC-B 80x55	55x65x10	55x65x5/7	74x4	95	81	55	63	52	85x2	1,250 kg
GDC-B 80x56	56x66x10	56x66x5/7	74x4	95	81	56	63	52	85x2	1,210 kg
GDC-B 80x60	60x70x10	60x70x5/7	74x4	95	81	60	63	52	85x2	1,030 kg
GDC-B 85x35	35x45x8	35x43x5/7	79x4	100	86	35	63	52	90x2	2,275 kg
GDC-B 85x40	40x50x10	40x48x5/7	79x4	100	86	40	63	52	90x2	2,100 kg
GDC-B 85x45	45x55x10	45x55x5/7	79x4	100	86	45	63	52	90x2	1,940 kg
GDC-B 85x50	50x60x10	50x60x5/7	79x4	100	86	50	63	52	90x2	1,750 kg
GDC-B 85x55	55x65x10	55x65x5/7	79x4	100	86	55	63	52	90x2	1,550 kg
GDC-B 85x60	60x70x10	60x70x5/7	79x4	100	86	60	63	52	90x2	1,330 kg

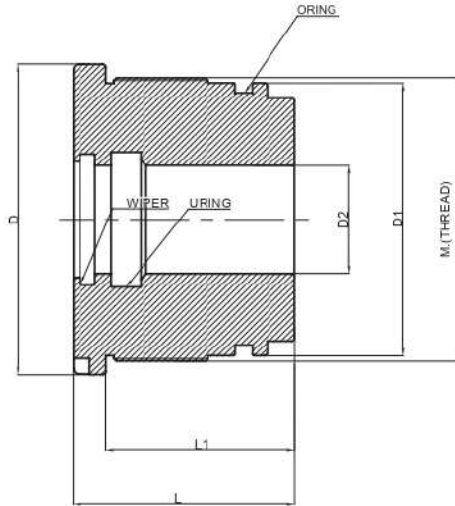
## CAST IRON GLAND STD. 1



Gland (Cast Iron GG25 / GG26 DIN 1691)

CODE	U-RING	WIPER	ORING	D	D1	D2	L	L1	THREAD	kg
GDC-B 90x35	35x45x8	35x43x5/7	84x4	105	91	35	63	52	95x2	2,570 kg
GDC-B 90x40	40x50x10	40x48x5/7	84x4	105	91	40	63	52	95x2	2,420 kg
GDC-B 90x45	45x55x10	45x55x5/7	84x4	105	91	45	63	52	95x2	2,260 kg
GDC-B 90x50	50x60x10	50x60x5/7	84x4	105	91	50	63	52	95x2	2,070 kg
GDC-B 90x55	55x65x10	55x65x5/7	84x4	105	91	55	63	52	95x2	1,880 kg
GDC-B 90x60	60x70x10	60x70x5/7	84x4	105	91	60	63	52	95x2	1,670 kg
GDC-B 90x65	65x75x10	65x75x5/7	84x4	105	91	65	63	52	95x2	1,430 kg
GDC-B 100x40	40x50x10	40x48x5/7	90x5	115	101	40	82	70	105x2	4,060 kg
GDC-B 100x45	45x55x10	45x55x5/7	90x5	115	101	45	82	70	105x2	3,830 kg
GDC-B 100x50	50x60x10	50x60x5/7	90x5	115	101	50	82	70	105x2	3,610 kg
GDC-B 100x55	55x65x10	55x65x5/7	90x5	115	101	55	82	70	105x2	3,360 kg
GDC-B 100x56	56x66x10	56x66x5/7	90x5	115	101	56	82	70	105x2	3,290 kg
GDC-B 100x60	60x70x10	60x70x5/7	90x5	115	101	60	82	70	105x2	3,060 kg
GDC-B 100x65	65x75x10	65x75x5/7	90x5	115	101	65	82	70	105x2	2,760 kg
GDC-B 100x70	70x80x12	70x80x5/7	90x5	115	101	70	82	70	105x2	2,420 kg
GDC-B 100x75	75x85x12	75x87x12/7	90x5	115	101	75	82	70	105x2	2,030 kg
GDC-B 100x80	80x90x12	80x92x12/7	90x5	115	101	80	82	70	105x2	1,670 kg
GDC-B 110x50	50x60x10	50x60x5/7	100x5	130	111	50	82	70	115x2	4,650 kg
GDC-B 110x55	55x65x10	55x65x5/7	100x5	130	111	55	82	70	115x2	4,400 kg
GDC-B 110x56	56x66x10	56x66x5/7	100x5	130	111	56	82	70	115x2	4,380 kg
GDC-B 110x60	60x70x10	60x70x5/7	100x5	130	111	60	82	70	115x2	4,150 kg
GDC-B 110x65	65x75x10	65x75x5/7	100x5	130	111	65	82	70	115x2	3,820 kg
GDC-B 110x70	70x80x12	70x80x5/7	100x5	130	111	70	82	70	115x2	3,510 kg
GDC-B 110x75	75x85x12	75x87x12/7	100x5	130	111	75	82	70	115x2	3,110 kg
GDC-B 110x80	80x90x12	80x92x12/7	100x5	130	111	80	82	70	115x2	2,730 kg
GDC-B 115x50	50x60x10	50x60x5/7	105x5	130	116	50	82	70	120x2	5,150 kg
GDC-B 115x55	55x65x10	55x65x5/7	105x5	130	116	55	82	70	120x2	4,850 kg
GDC-B 115x60	60x70x10	60x70x5/7	105x5	130	116	60	82	70	120x2	4,580 kg
GDC-B 115x65	65x75x10	65x75x5/7	105x5	130	116	65	82	70	120x2	4,240 kg
GDC-K 115x70	70x80x12	70x80x5/7	105x5	130	116	70	82	70	120x2	3,940 kg
GDC-B 115x75	75x85x12	75x87x7/12	105x5	130	116	75	82	70	120x2	3,550 kg
GDC-K 115x80	80x90x12	80x92x7/12	105x5	130	116	80	82	70	120x2	3,180 kg
GDC-B 120x50	50x60x10	50x60x5/7	110x5	140	121	50	82	70	125x2	5,760 kg

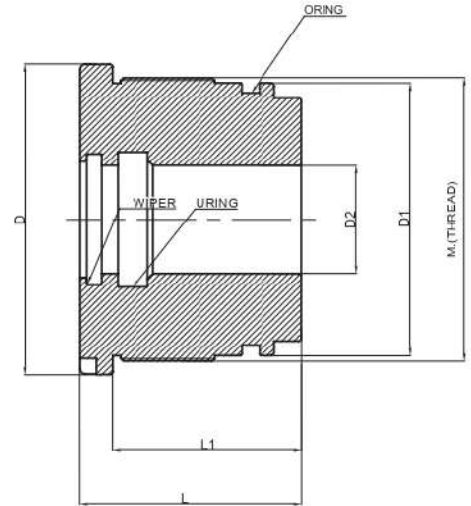
# CAST IRON GLAND STD. 1



Gland (Cast Iron GG25 / GG26 DIN 1691)

CODE	U-RING	WIPER	ORING	D	D1	D2	L	L1	THREAD	kg
GDC-B 120x55	55x65x10	55x65x5/7	110x5	140	121	55	82	70	125x2	5,540 kg
GDC-B 120x60	60x70x10	60x70x5/7	110x5	140	121	60	82	70	125x2	5,250 kg
GDC-B 120x65	65x75x10	65x75x5/7	110x5	140	121	65	82	70	125x2	4,950 kg
GDC-B 120x70	70x80x12	70x80x5/7	110x5	140	121	70	82	70	125x2	4,630 kg
GDC-B 120x75	75x85x12	75x87x7/12	110x5	140	121	75	82	70	125x2	4,230 kg
GDC-B 120x80	80x90x12	80x92x7/12	110x5	140	121	80	82	70	125x2	3,860 kg
GDC-B 120x85	85x95x12	85x97x7/12	110x5	140	121	85	82	70	125x2	3,420 kg
GDC-B 120x90	90x100x12	90x102x7/12	110x5	140	121	90	82	70	125x2	3,050 kg
GDC-B 125x50	50x60x10	50x60x5/7	115x5	145	126	50	82	70	130x2	6,350 kg
GDC-B 125x55	55x65x10	55x65x5/7	115x5	145	126	55	82	70	130x2	6,090 kg
GDC-B 125x60	60x70x10	60x70x5/7	115x5	145	126	60	82	70	130x2	5,850 kg
GDC-B 125x65	65x75x10	65x75x5/7	115x5	145	126	65	82	70	130x2	5,490 kg
GDC-B 125x70	70x80x12	70x80x5/7	115x5	145	126	70	82	70	130x2	5,190 kg
GDC-B 125x75	75x85x12	75x87x7/12	115x5	145	126	75	82	70	130x2	4,850 kg
GDC-B 125x80	80x90x12	80x92x7/12	115x5	145	126	80	82	70	130x2	4,430 kg
GDC-B 125x85	85x95x12	85x97x7/12	115x5	145	126	85	82	70	130x2	4,050 kg
GDC-B 125x90	90x100x12	90x102x7/12	115x5	145	126	90	82	70	130x2	3,570 kg
GDC-B 130x60	60x70x10	60x70x5/7	120x6	150	131	60	102	90	135x2	7,830 kg
GDC-B 130x70	70x80x12	70x80x5/7	120x6	150	131	70	102	90	135x2	6,970 kg
GDC-B 130x80	80x90x12	80x92x7/12	120x6	150	131	80	102	90	135x2	6,120 kg
GDC-B 130x90	90x100x12	90x102x7/12	120x6	150	131	90	102	90	135x2	5,100 kg
GDC-B 130x100	100x115x12	100x112x7/12	120x6	150	131	100	102	90	135x2	3,890 kg
GDC-B 140x60	60x70x10	60x70x5/7	130x6	160	141	60	102	90	145x2	9,410 kg
GDC-B 140x65	65x75x10	65x75x5/7	130x6	160	141	65	102	90	145x2	9,030 kg
GDC-B 140x70	70x80x12	70x80x5/7	130x6	160	141	70	102	90	145x2	8,660 kg
GDC-B 140x80	80x90x12	80x92x7/12	130x6	160	141	80	102	90	145x2	7,700 kg
GDC-B 140x85	85x95x12	85x97x7/12	130x6	160	141	85	102	90	145x2	7,250 kg
GDC-B 140x90	90x100x12	90x102x7/12	130x6	160	141	90	102	90	145x2	6,680 kg
GDC-B 140x100	100x115x12	100x112x7/12	130x6	160	141	100	102	90	145x2	5,470 kg
GDC-B 150x60	60x70x10	60x70x5/7	140x6	170	151	60	102	90	155x2	11,070 kg
GDC-B 150x70	70x80x12	70x80x5/7	140x6	170	151	70	102	90	155x2	10,360 kg
GDC-B 150x80	80x90x12	80x92x7/12	140x6	170	151	80	102	90	155x2	9,340 kg
GDC-B 150x90	90x100x12	90x102x7/12	140x6	170	151	90	102	90	155x2	8,400 kg

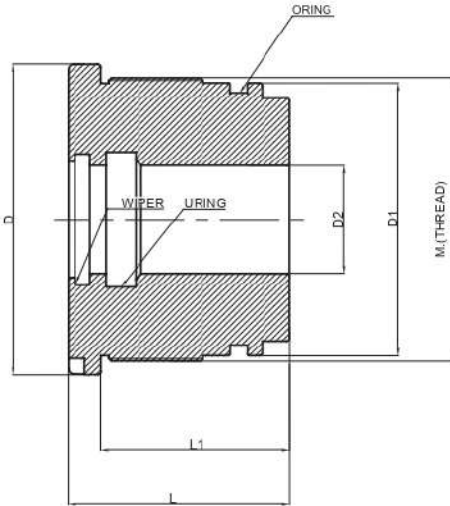
## CAST IRON GLAND STD. 1



Gland (Cast Iron GG25 / GG26 DIN 1691)

CODE	U-RING	WIPER	ORING	D	D1	D2	L	L1	THREAD	kg
GDC-B 150x100	100x115x12	100x112x7/12	140x6	170	151	100	102	90	155x2	7,150 kg
GDC-B 160x60	60x70x10	60x70x5/7	150x6	180	161	60	102	90	165x2	12,830 kg
GDC-B 160x70	70x80x12	70x80x5/7	150x6	180	161	70	102	90	165x2	12,190 kg
GDC-B 160x80	80x90x12	80x92x7/12	150x6	180	161	80	102	90	165x2	11,330 kg
GDC-B 160x90	90x100x12	90x102x7/12	150x6	180	161	90	102	90	165x2	10,210 kg
GDC-B 160x100	100x115x12	100x112x7/12	150x6	180	161	100	102	90	165x2	8,940 kg
GDC-B 160x110	110x125x12	110x122x7/12	150x6	180	161	110	102	90	165x2	7,750 kg
GDC-B 160x120	120x135x15	120x132x7/12	150x6	180	161	120	102	90	165x2	6,310 kg
GDC-B 170x80	80x90x12	80x92x7/12	160x6	190	171	80	102	90	175x2	13,530 kg
GDC-B 170x90	90x100x12	90x102x7/12	160x6	190	171	90	102	90	175x2	12,250 kg
GDC-B 170x100	100x115x12	100x112x7/12	160x6	190	171	100	102	90	175x2	10,860 kg
GDC-B 170x110	110x125x12	110x122x7/12	160x6	190	171	110	102	90	175x2	9,400 kg
GDC-B 170x120	120x135x15	120x132x7/12	160x6	190	171	120	102	90	175x2	8,000 kg
GDC-B 180x70	70x80x12	70x80x5/7	170x6	200	181	70	102	90	185x2	16,010 kg
GDC-B 180x80	80x90x12	80x92x7/12	170x6	200	181	80	102	90	185x2	15,100 kg
GDC-B 180x90	90x100x12	90x102x7/12	170x6	200	181	90	102	90	185x2	14,070 kg
GDC-B 180x100	100x115x12	100x112x7/12	170x6	200	181	100	102	90	185x2	12,810 kg
GDC-B 180x110	110x125x12	110x122x7/12	170x6	200	181	110	102	90	185x2	11,520 kg
GDC-B 180x120	120x135x15	120x132x7/12	170x6	200	181	120	102	90	185x2	10,170 kg
GDC-B 180x130	130x150x15	130x142x7/12	170x6	200	181	130	102	90	185x2	8,680 kg
GDC-B 180x140	140x160x15	140x152x7/12	170x6	200	181	140	102	90	185x2	6,930 kg
GDC-B 200x90	90x100x12	90x102x7/12	190x6	220	201	90	102	90	205x2	18,300 kg
GDC-B 200x100	100x115x12	100x112x7/12	190x6	220	201	100	102	90	205x2	17,400 kg
GDC-B 200x110	110x125x12	110x122x7/12	190x6	220	201	110	102	90	205x2	16,000 kg
GDC-B 200x120	120x135x15	120x132x7/12	190x6	220	201	120	102	90	205x2	14,590 kg
GDC-B 200x130	130x150x15	130x142x7/12	190x6	220	201	130	102	90	205x2	12,860 kg
GDC-B 200x140	140x160x15	140x152x7/12	190x6	220	201	140	102	90	205x2	11,330 kg
GDC-B 220x100	100x115x12	100x112x7/12	210x6	250	221	100	102	90	225x2	22,600 kg
GDC-B 220x110	110x125x12	110x122x7/12	210x6	250	221	110	102	90	225x2	21,100 kg
GDC-B 220x120	120x135x15	120x132x7/12	210x6	250	221	120	102	90	225x2	19,770 kg
GDC-B 220x130	130x150x15	130x142x7/12	210x6	250	221	130	102	90	225x2	18,100 kg
GDC-B 220x140	140x160x15	140x152x7/12	210x6	250	221	140	102	90	225x2	16,540 kg

# TECHNICAL PROPERTIES STD. 1



## CAST IRON DIN 1691 GG25 HYDRAULIC CYLINDER GLAND TECHNICAL PROPERTIES

CAST IRON WITH LAMELLAR GRAPHITE FOR GENERAL PURPOSES	
Tensile strength N/mm <sup>2</sup> min	250
Hardness HB	180-250
Micro structure	Pearlitic (min%90)
Chemical analysis (For the parts with medium thickness)	C :3.00-3.25 Si :1.85-2.10 Mn :0.40-0.70 S :0.12 max P :0.25 max

EQUIVALENT STANDARTS	
TURKEY - TSE TS-552	DDL 25
EU - EN 1561	GJL 250
GERMANY - DIN 1691	GG 25
USA - ASTM A 4876	Class 35 B
G. BRITAIN - BS 1452	Grade 250
FRANCE - NF A32-101	Ft 25 D
ITALY - UNI 5007	GG 25
JAPAN - JIS G 5501	FC 250

PRODUCT TYPE	WORKING PRESSURE	TEST PRESSURE	OPERATING TEMPERATURE
GG-25-26 Cast Iron Glands	320 BAR	400 BAR	-30° C +100° C

### NOTE

Working and test pressure values may change according to different used sealing.

Above values are according to standard sealing.